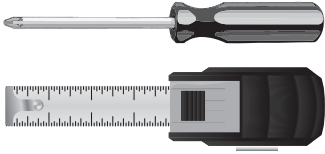


Tools Required:

1. Philips Head Screwdriver
2. Tape Measure or Ruler



BATH ROYALE

LUXURY BATHROOM ACCESSORIES

Model No.
BR644 Elongated
Superior Toilet Seat with
Slow Close & Quick Release

INSTALLATION INSTRUCTIONS



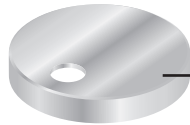
Installation is not difficult, but it is **VERY DIFFERENT** from other seats. Please follow these instructions step-by-step. (Video available at bathroyale.com).
MISSING PARTS? Please do not return your seat. Call (704) 589-1009 or email info@bathroyale.com and we will immediately send parts at no charge.

PARTS LIST



Toilet seat with lid (1)

Note: Seat must be installed for slow close to work.



Mounting base covers (4)

(2 sets included, choose color-matched or stainless steel).



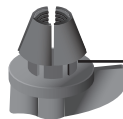
Stainless steel screws (2)



Stainless steel washers (2)



Mounting base with stainless steel post and silicone rubber seal on bottom (2)



Grey split wingnuts (2)



NOTE: Toilet bowls without access to nuts under seat require top mount anchors sold separately at bathroyale.com

Questions? Visit bathroyale.com or call 704-589-1009

INSTALLATION INSTRUCTIONS



Mounting surface of toilet must be flat, clean and dry with no chemical residue.

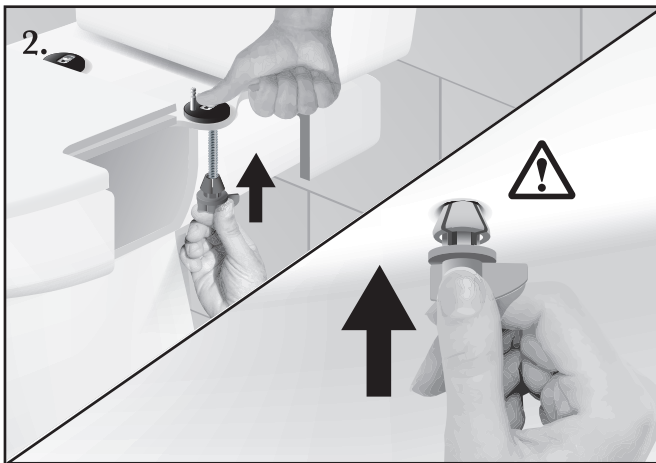
TIP: We recommend Windex® (or any glass cleaner) around the mounting holes to get the mounting surface squeaky clean.



1. Install mounting bases on toilet bowl.

- Place mounting bases over holes with posts facing the front of the bowl.
- Place stainless steel washers in mounting base slots.
- Insert screws through the washers, mounting bases and holes in the toilet.

TIP: Mounting bases rotate 360 degrees allowing seat to fit non-standard hole spacings (4 ½ to 6 ½ inches).



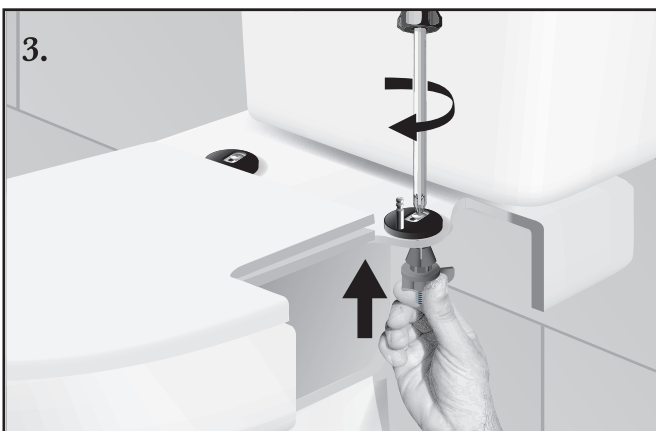
2. Install wingnuts.

Hold screw down and slide wingnut up the length of the screw.



Be sure the tips of the wingnut are centered in the underside of the mounting hole.

TIP: You may have to move the wingnut around until the tips slip into the hole.

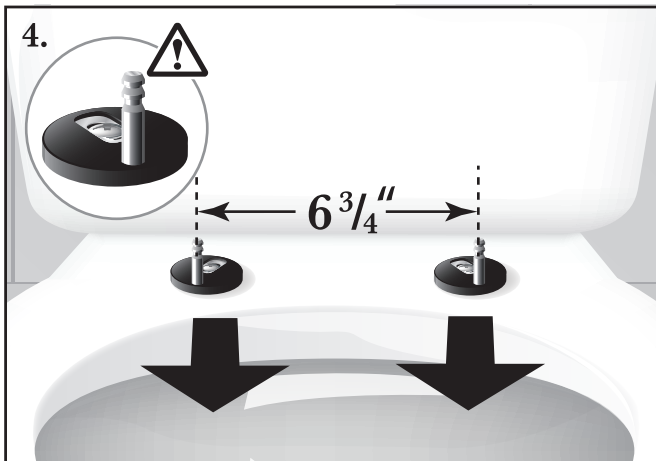


3. Thread wingnuts.

Hold wingnut and press upward while turning the screw from the top with a screwdriver. As screw tightens, tips of wingnut are wedged into the hole.

TIP: Do not completely tighten. The mounting bases must be able to move so the seat can be attached and adjusted.

INSTALLATION INSTRUCTIONS



Mounting posts must face forward.

4. Rotate mounting bases so the posts are closest to the front of the bowl (not tank).

Using a tape measure or ruler, adjust the mounting bases so the posts are approximately 6 ³/₄ inches apart (this is the distance between the mounting holes in the seat).

TIP: Do not completely tighten screws yet. (Mounting bases must move freely).



5. Attach seat.

Hold seat over mounting posts and confirm alignment with the holes in the back of the seat. Once aligned, carefully lower the seat (holes) onto mounting posts.

TIP: Jiggle seat and move bases (if necessary) to make sure posts are completely inserted.



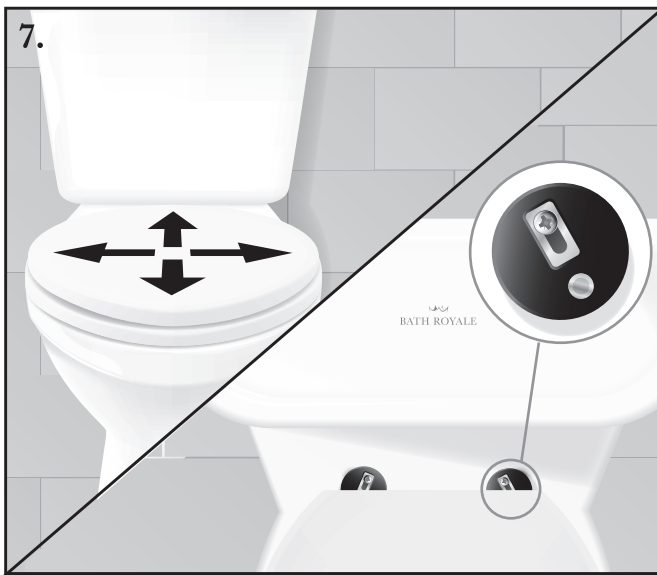
6. Close seat and lid.

Tap forward and let the seat and lid close by themselves.

SLOW CLOSE TIP: It is OK to push the seat and cover closed. Unlike other slow close seats, Bath Royale® seats can be force-closed repeatedly, without damaging the slow-close mechanism.

Closing too slow? Push it closed.

INSTALLATION INSTRUCTIONS



7. Adjust seat.

With the lid closed, align seat with bowl by moving the seat and mounting bases together.

TIP: Lift mounting bases to unstick from bowl (loosen screws if necessary). We recommend installing the seat overhanging the front of the bowl by 1/4 inch, so men can lift the seat more easily without touching the toilet bowl.

TIP: In most cases, screw heads will be towards back of screw slot (see drawing). Don't worry if screw positions don't match on both sides. Hole positions can vary slightly on all toilets.



8. Double check seat alignment and tighten screws very firmly.

TIP: If screw heads are obstructed by the seat, hand tighten wingnuts, then remove seat for final tightening (see next step).



Be sure tips of wingnuts are centered in mounting holes beneath. Hold wingnuts and tighten screws very firmly with a screwdriver.



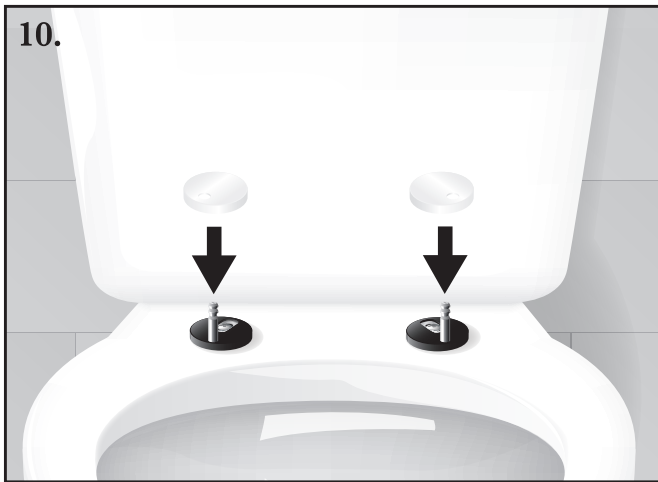
9. Remove seat.

a) Open seat and lid. (Hinges will pivot and you will feel some resistance. This is normal and the seat should remain connected to the posts).

b) With seat open to vertical position (90 degrees from closed), lift straight up with one hand.

TIP: Quick Release automatically 'unlocks' when seat is opened and 'locks' at any other angle (closed or partially closed).

INSTALLATION INSTRUCTIONS



10. Place mounting base covers on mounting bases.

BONUS: There is an extra pair of mounting base covers included. Choose between color-matched or stainless steel.



11. Replace seat.

Align holes with mounting posts and carefully lower seat back into place. **NOTE: Do not push hard or force seat onto posts. (If difficult, re-check alignment of posts and holes).**

**CONGRATULATIONS,
YOU ARE NOW FINISHED.**

TIP: Practice removing seat (Step 9) and replacing seat (Step 11).



CARE & CLEANING TIP: DO NOT spray or saturate the mounting bases. (Doing so may cause seat to move out of position). Spray your cloth first then wipe.

TROUBLE SHOOTING TIPS:

- a) Rear bumpers are not supposed to touch the bowl until person is seated.
- b) If seat or lid do not stay open, adjust the seat forward (increase length Step 7) which also increases layback angle. Make sure tank lid is pushed back as far as possible.
- c) See more tips and installation video at bathroyale.com

Questions? Contact us at (704) 589-1009 (7 days/week)



BATH ROYALE

LUXURY BATHROOM ACCESSORIES